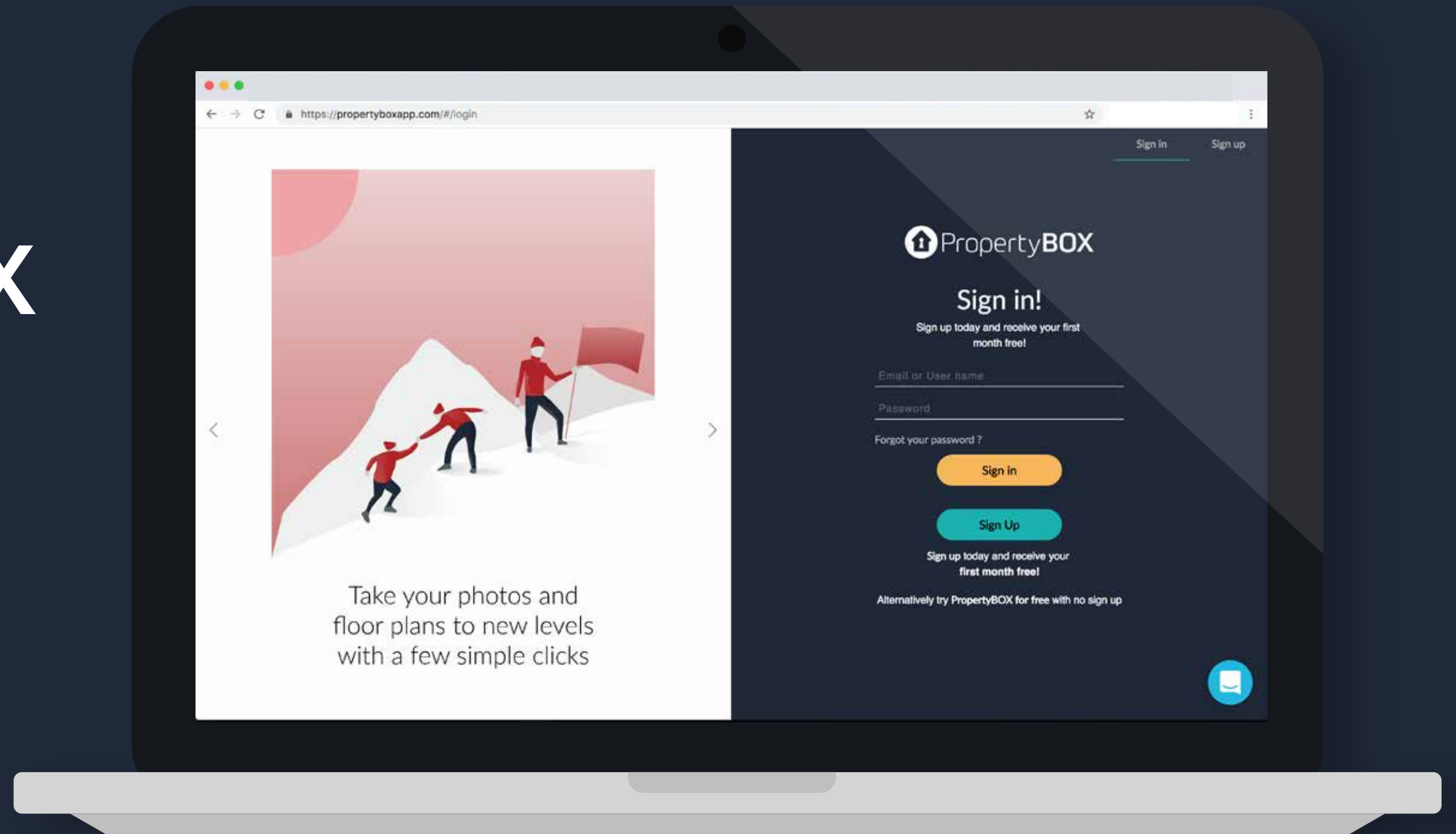
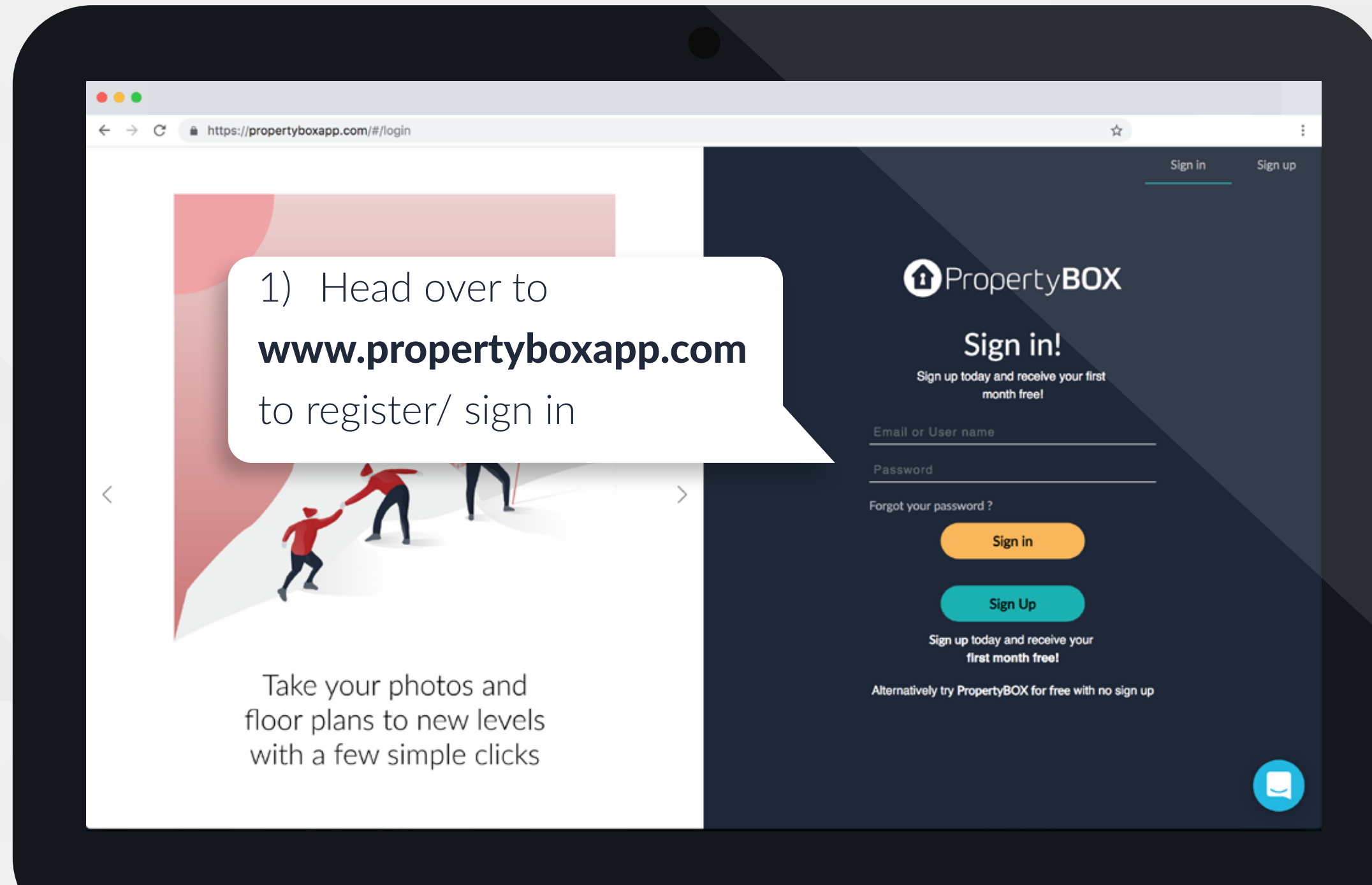


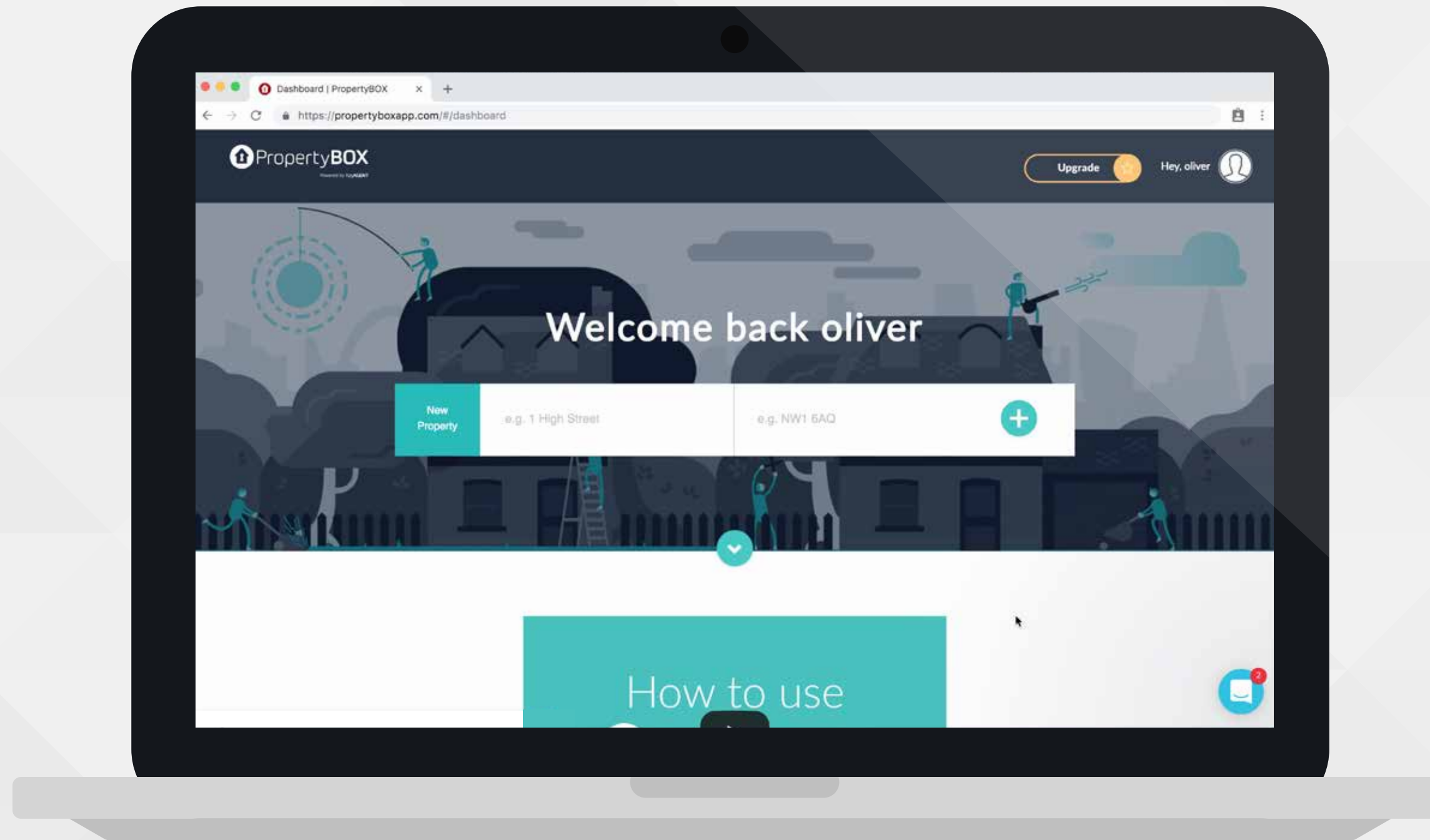


How to use PropertyBOX

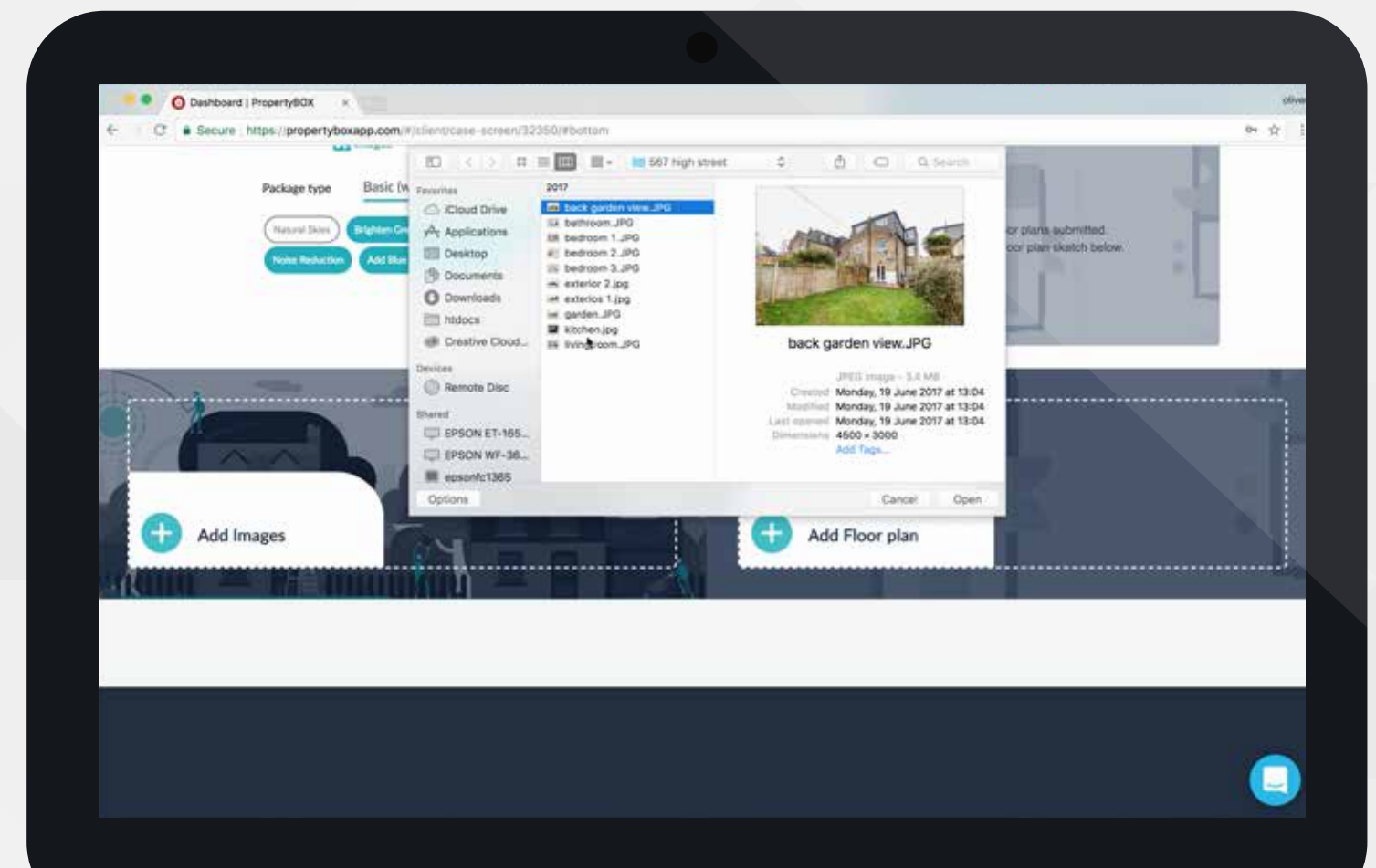
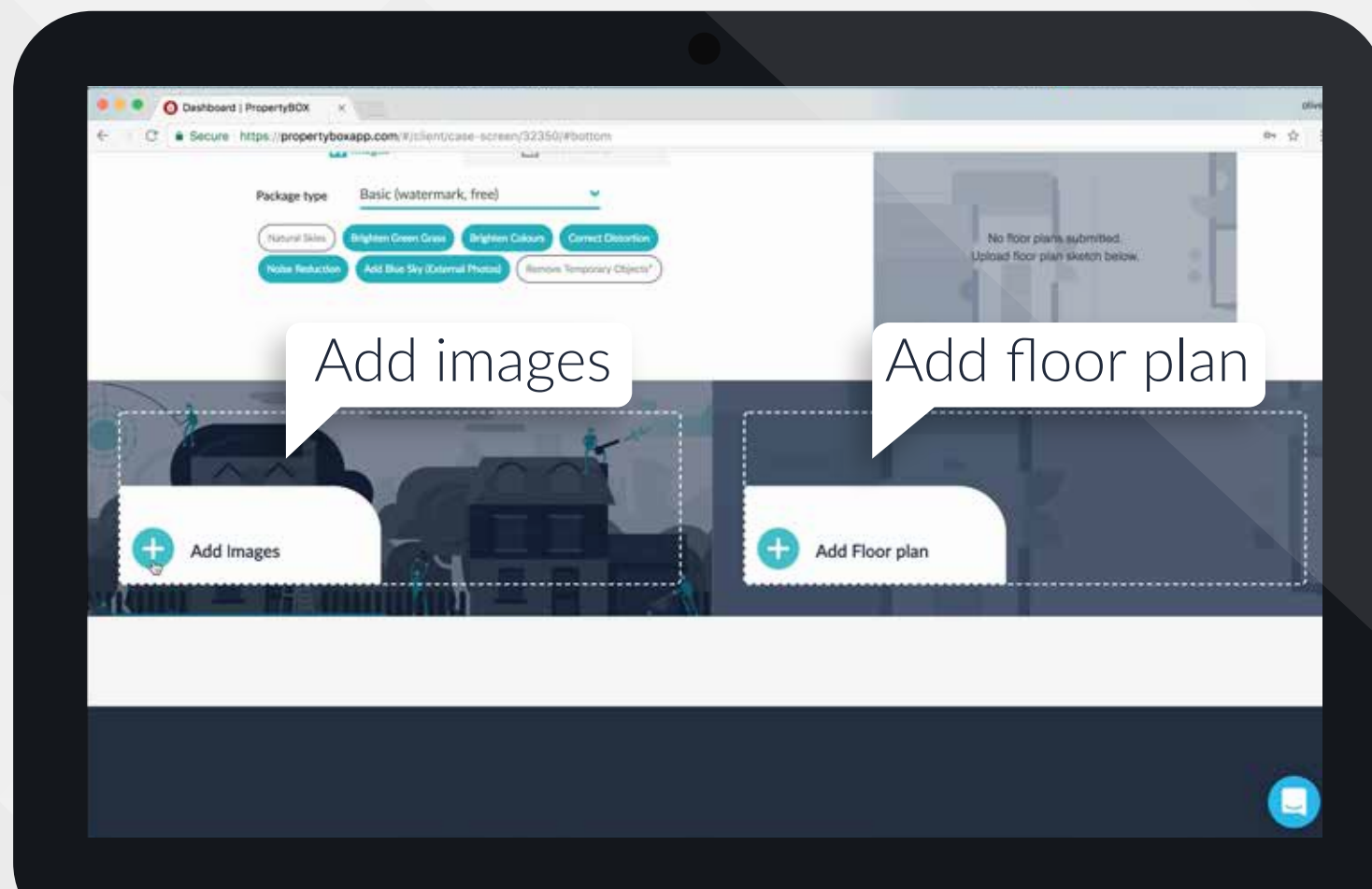




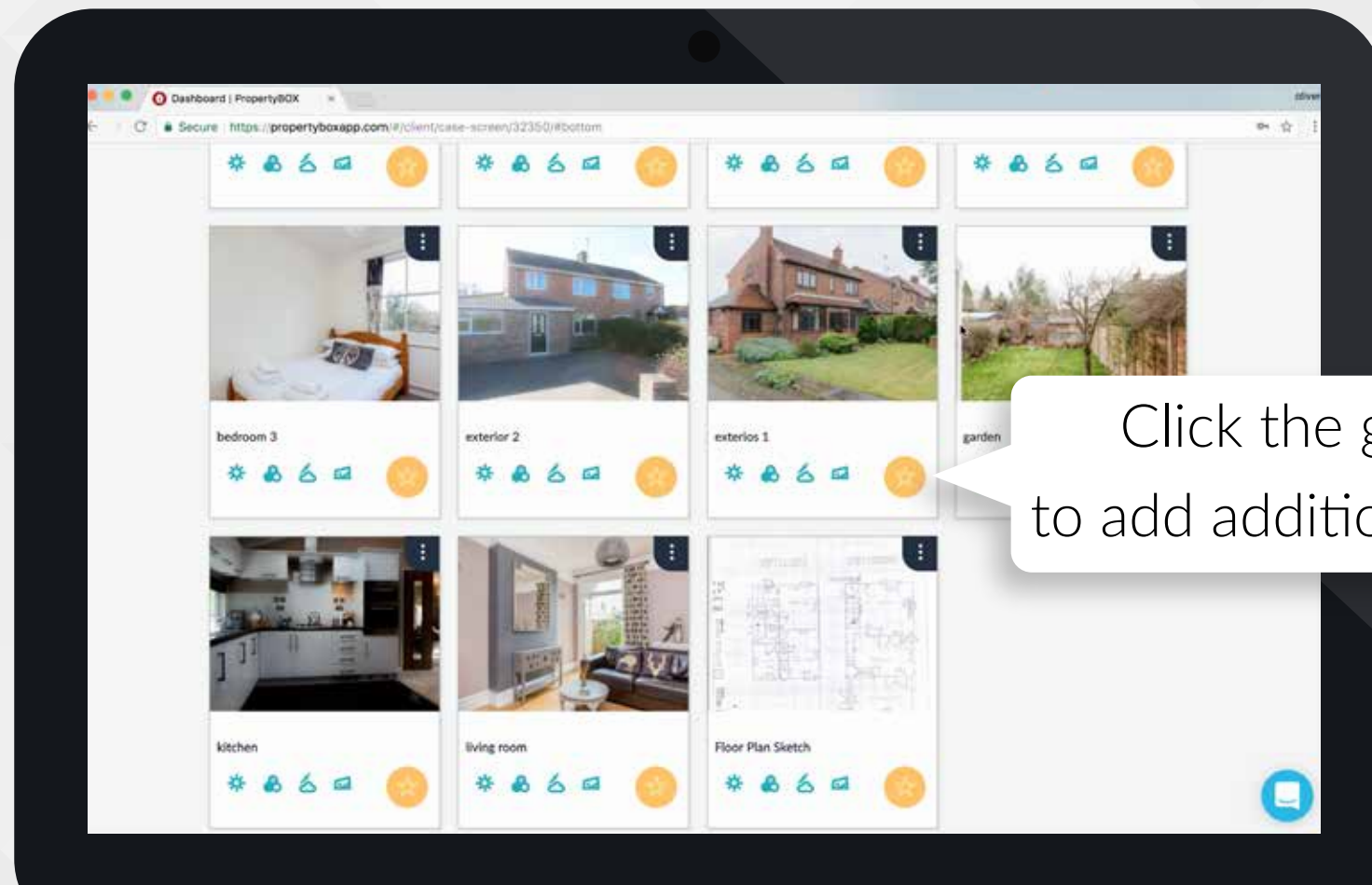
2) Your first time logging in, you will see a video on how to use PropertyBOX. Once you have logged in, you are then able to create a new property. Include the 1st line of Address and Postcode



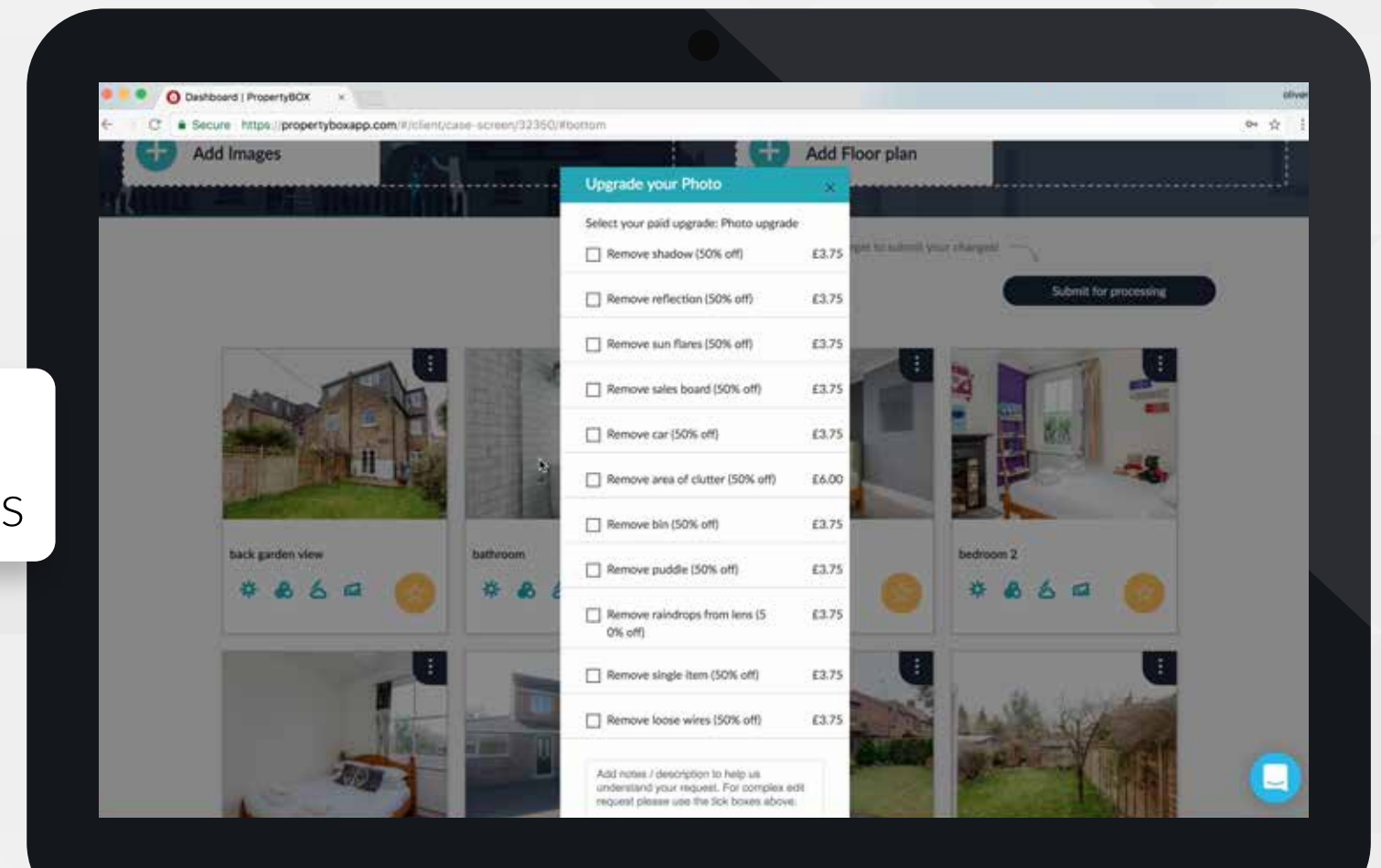
3) Once you have added the property, you then need to add your photos and floor plan. To do this, click Add Images, select the images of the property from your desktop or mobile images that you wish to enhance (we recommend 10-15 pictures per property). Also include your hand-drawn floor plan from your files.



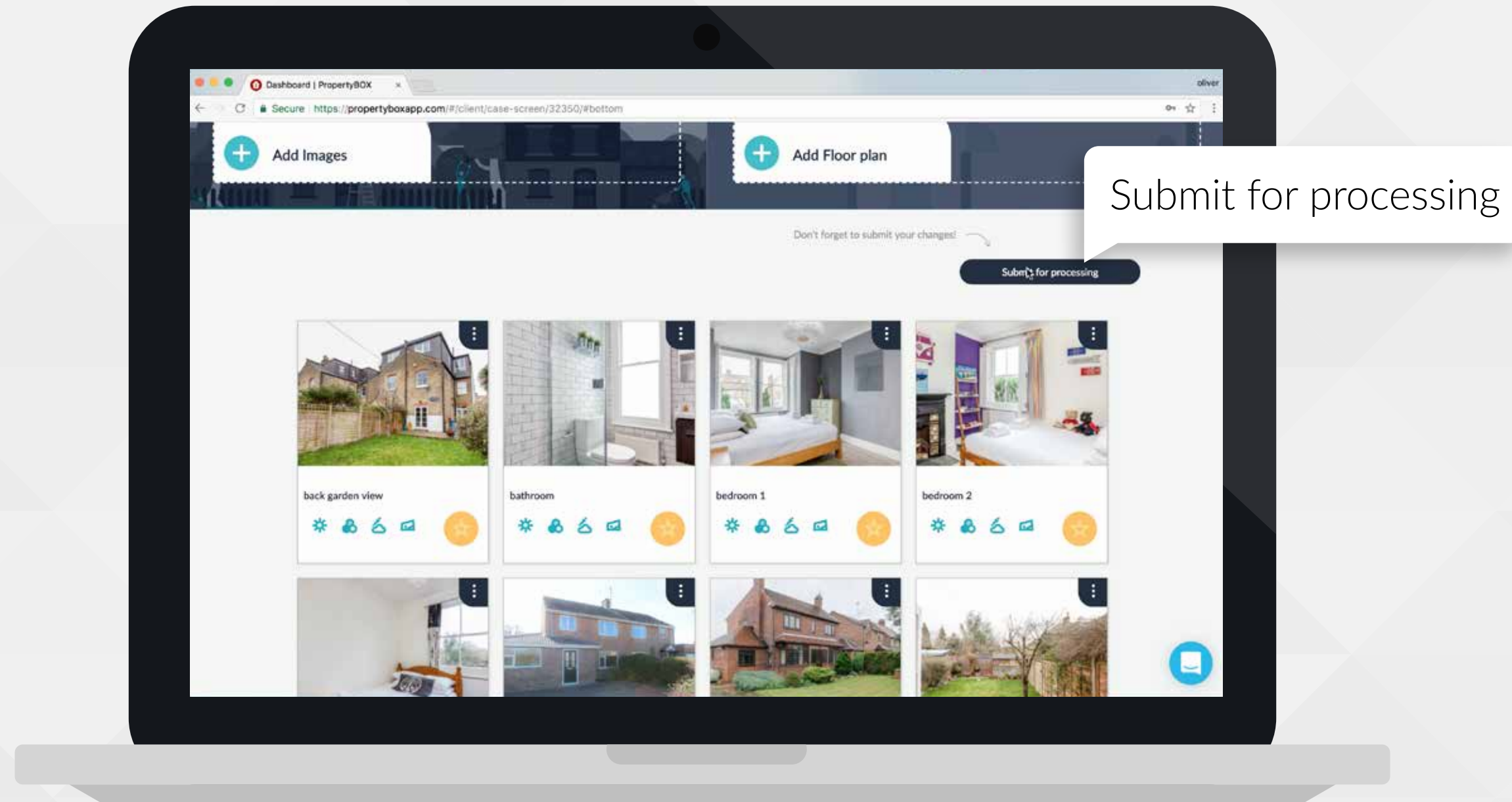
4) On each of the images you have uploaded, you can click on the star and use additional features.



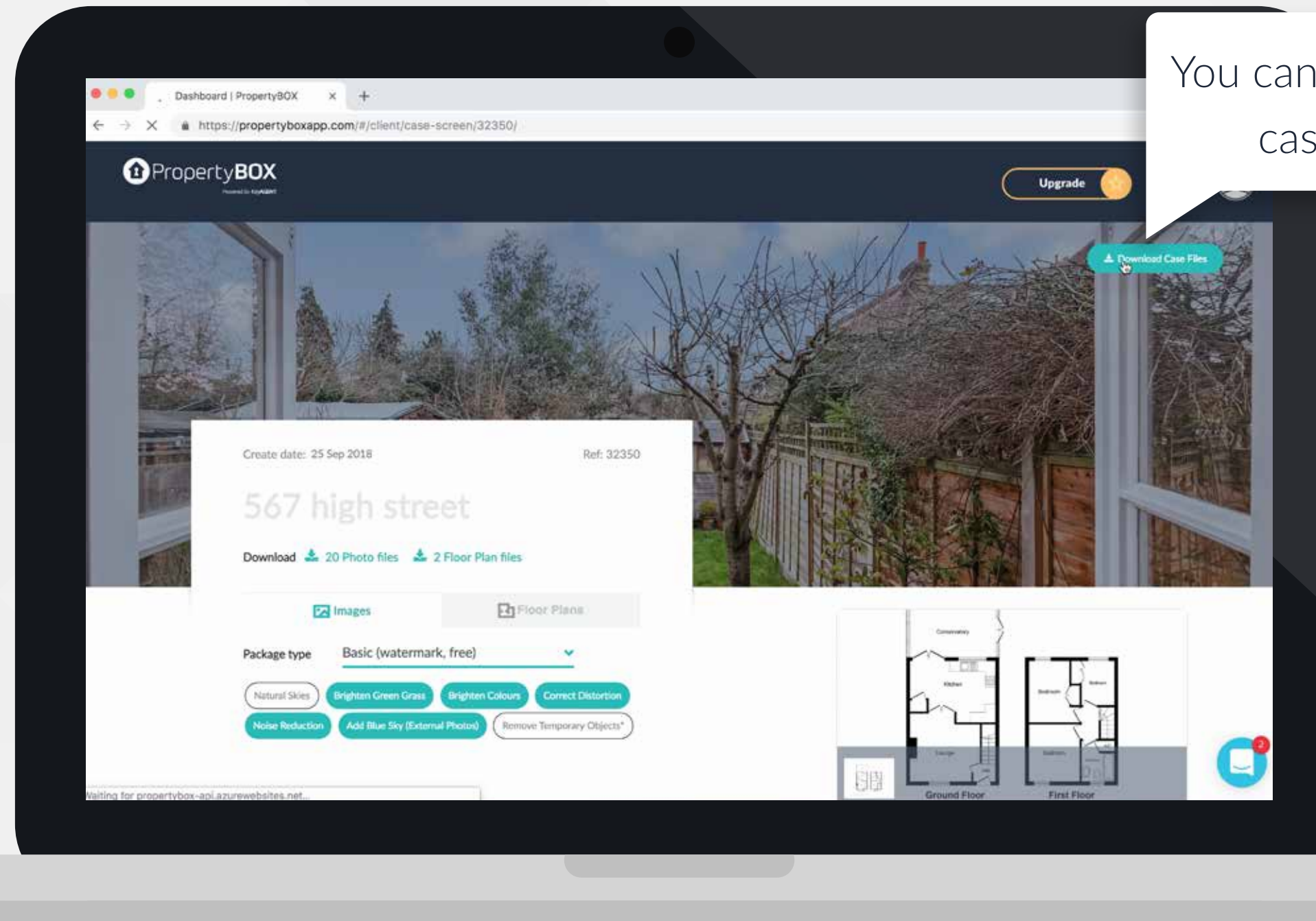
Click the gold star to add additional features



5) Once you have finished uploading the photos and floor plan, submit for processing. PropertyBOX will start working on this straight away and you can expect to receive your polished images and digital floor plan via email to your Inbox in just a few hours!

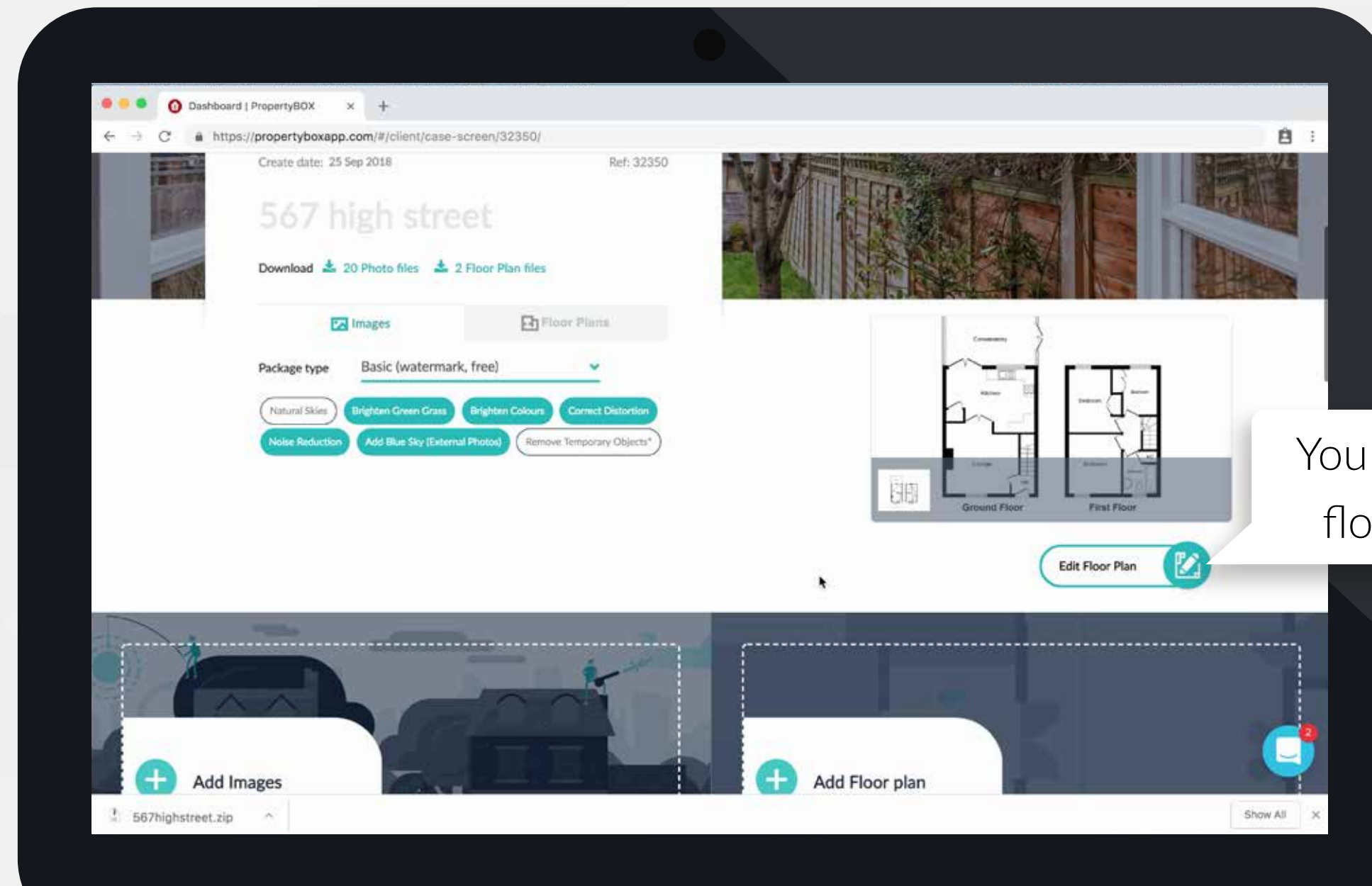


6) You can download your enhanced images and digital floor plan from the email, or from PropertyBOX



You can download your case files here

7) You can also edit your floor plans once they have been returned. This means you have control on what changes can be made and it saves you time.



You can edit your floor plan here